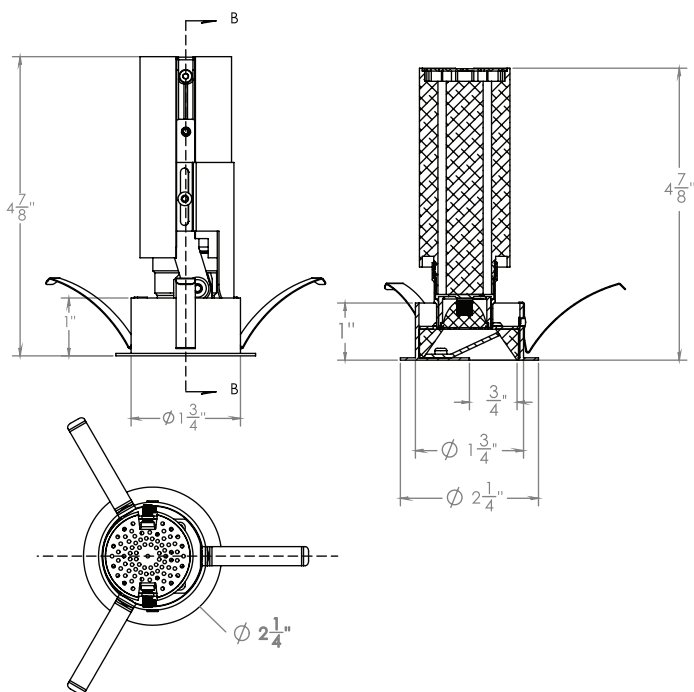
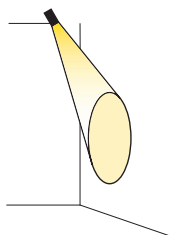


35° Tilt



SERIES	DELIVERED LUMENS	WATTAGE
800	397	10 W
1000	528	14 W

Based on 3000K, 90+ CRI. Actual wattage may vary +/- 5%

#### VERTICAL ADJUSTMENT

Slide upper module up and down to achieve exact desired beam angle from narrow to wide distribution. Alternatively, an Allen wrench is provided with the fixture, which decreases the height of the upper module for a wider distribution. Twisting the captive screws counterclockwise increases the height of the upper module for a narrower distribution.

#### TOOL-LESS HOT AIMING

Manually adjust module to achieve up to a 35-degree tilt, giving you freedom to aim light precisely. Module can be locked securely into place on reaching desired position.

#### SHIELDING

Once tilt, rotation, and beam angle are adjusted and locked in place, shielding of the LEDs can be adjusted to prevent light loss and enhance directional aiming.

#### WALL WASH

A deeply regressed light source and a wall wash eyelid trim provide even illumination that decreases glare at the ceiling line. Wall wash distribution highlights shelves, displays, or artwork on the wall and gives the appearance of an enlarged room.

LUMENS	800, 1000 Series
CCT	27K, 30K, 35K, 40K, 50K
CRI	90
COLOR QUALITY	2 Step MacAdam Ellipse
OPTIC	MD (Medium)
FINISH	Chrome, White
DIMMING	DIM10 (0-10V dimming), DIMTR ( Triac - 120V only)
SHAPE	Round (Flanged, Trim-less)
PHOTOMETRIC TESTS	In Accordance with IES LM79 and LM80

## TRIM OPTIONS ( Select only one )

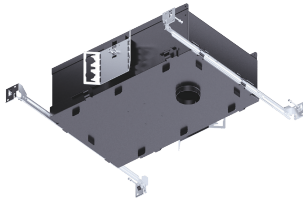


Example: **A1R-F-1163-LED-800L-MD-30K-90-CL-WH**

A1R-F-1163-LED					
SERIES	PERFORMANCE	DISTRIBUTION	CCT	CRI	FINISH
<b>A1R-F-1163-LED</b> - 1" Round LED Adjustable and Fixed Downlight	<b>800L</b> - 397 lumens <b>1000L</b> - 527 lumens *(Non-IC only)	<b>MD</b> - Medium Consult factory for narrow or wide distribution	<b>27K</b> - 2700K <b>30K</b> - 3000K <b>35K</b> - 3500K <b>40K</b> - 4000K <b>50K</b> - 5000K	<b>90</b> - 90 CRI	<b>CL-WH</b> - Chrome - White <b>W-WH</b> - White - White

## HOUSING OPTIONS ( Select only one )

IC NEW CONSTRUCTION



Example: **A1R-LED-IC-10W-DIM10-MVOLT-BP30**

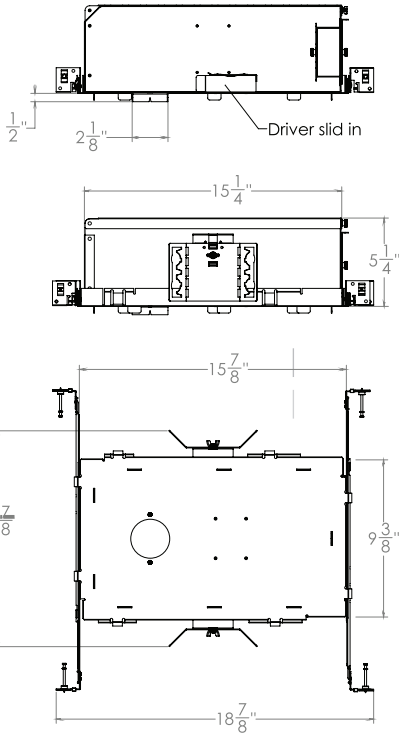
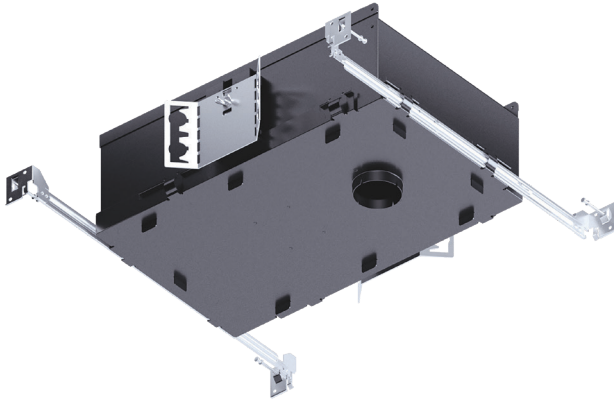
			BP30
POWER PACK	DIMMING	VOLTAGE	DRIVER
<b>A1R-LED-IC-10W</b> - For 800L Lumens <b>A1R-LED-IC-15W</b> - For 1000 Lumens	<b>DIM10</b> <b>DIMTR</b> - Triac (120V only)	<b>120</b> <b>277</b> <b>MVOLT</b> DIMTR - only 120V	<b>BP30</b>

NON-IC REMODEL/ NEW CONSTRUCTION



Example: **A1R-LED-R-10W-DIM10-MVOLT-BP30**

			BP30
POWER PACK	DIMMING	VOLTAGE	DRIVER
<b>A1R-LED-R-10W</b> - For 800 Lumens <b>A1R-LED-R-15W</b> - For 1000 Lumens	<b>DIM10</b> - 0-10V <b>DIMTR</b> - Triac (120V only)	<b>120</b> <b>277</b> <b>MVOLT</b> DIMTR - only 120V	<b>BP30</b>



#### IC HOUSING

Thermally protected, specification grade adjustable recessed housing. For new construction insulated ceilings where housing will be in direct contact with insulation. Die-formed all aluminum construction matt black painted for maximum heat dissipation, rust protection and glare free illumination.

#### COLLAR BRACKET

Please consult factory for custom or thicker ceiling applications. Integral laser beam slots allow the use of guide strings or leveling laser guns to ensure that all luminaires are installed in an level and straight plane.

#### ELECTRICAL/TRANSFORMER

Junction box and driver can be accessed from below the ceiling and above the ceiling. Junction box is listed for through branch circuit wiring, 12 AWG 90° C supply conductors, and has four 1/2" KOs, one 3/4" KO and four Romex knockouts with true pry-out slots and strain clamps.

#### MOUNTING

Preinstalled bar hangers allow housing to be positioned and locked at any point within a 24" joist span. They can be positioned on either the long or short axis of the housing and can be shortened for 12" joists. They contain a double-headed real nail for secure attachment into the joist. Bar hanger nails are installed on a 20° downward angle for better contact, and the 90° pivoting mounting plate makes installation fast and accurate. Bar hangers can fit onto T-Bar spline with additional slots and holes for special mounting methods if necessary. Butterfly brackets are also provided and are constructed from 18-gauge steel and can be adjusted vertically. Butterfly brackets may be installed with 3/4" or 1-1/2" lathing channel, 1/2" EMT, or optional C-Channel mounting bars are available.

#### LABELS

c-UL-us listed for damp location  
c-UL-us listed for feed through wiring  
c-UL-us listed for direct contact with insulation

#### WARRANTY

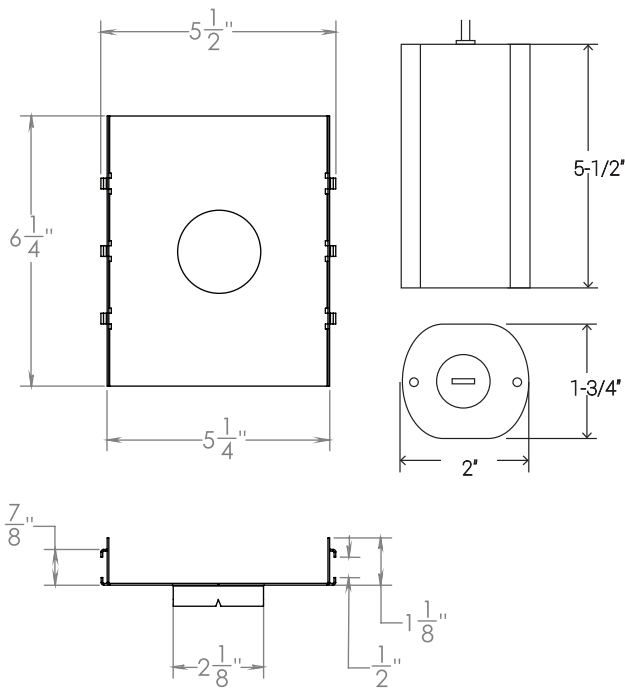
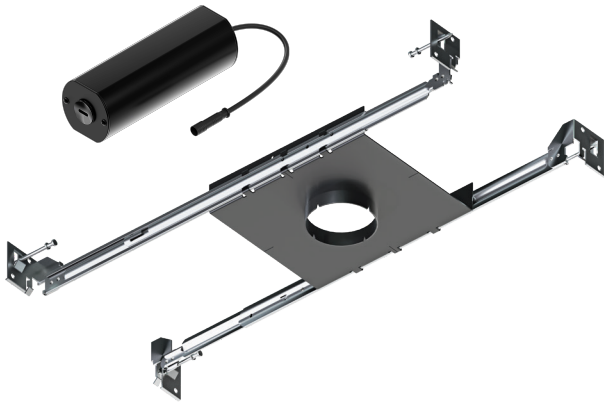
A1R-LED-IC Recessed luminaires are covered by Elite's 5 year limited warranty. As a system, we stand behind our entire products from housing to bar hangers.

LUMENS	800 - <b>A1R-LED-IC-10W</b> 1000 - <b>A1R-LED-IC-15W</b>
DIMMING	DIM10 (0-10V dimming), DIMTR ( Triac ) - 120V only
VOLTAGE	120V, 277V, MVOLT

SERIES	DELIVERED LUMENS	WATTAGE
800	397	10 W
1000	528	14 W

Based on 3000K, 90+ CRI. Actual wattage may vary +/- 5%





### FOR NEW CONSTRUCTION NON-IC MOUNTING TRAY

Die-formed aluminum and galvanized steel for maximum heat dissipation and rust protection. New Construction NON-IC housing designed for new construction installations and suitable for use in non-insulation covered ceilings. Housing is NON-IC rated and insulation must be pulled 3" from housing. May be installed in 2" x 8" joist construction.

### COLLAR BRACKET

Please consult factory for custom or thicker ceiling applications. Integral laser beam slots allow the use of guide strings or leveling laser guns to ensure that all luminaires are installed in an level and straight plane.

### MOUNTING

Preinstalled bar hangers allow housing to be positioned and locked at any point within a 24" joist span. They can be positioned on either the long or short axis of the housing and can be shortened for 12" joists. They contain a double-headed real nail for secure attachment into the joist. Bar hanger nails are installed on a 20° downward angle for better contact, and the 90° pivoting mounting plate makes installation fast and accurate. Bar hangers can fit onto T-Bar spline with additional slots and holes for special mounting methods if necessary. Butterfly brackets are also provided and are constructed from 18-gauge steel and can be adjusted vertically. Butterfly brackets may be installed with 3/4" or 1-1/2" lathing channel, 1/2" EMT, or optional C-Channel mounting bars are available.

### LABELS

c-UL-us listed for damp location  
c-UL-us listed for feed through wiring

### WARRANTY

A1R-LED luminaires are covered by Elite's 5 year limited warranty. As a system, we stand behind our entire products from housing to bar hangers.

LUMENS	800 - <b>A1R-LED-R-10W</b> 1000 - <b>A1R-LED-R-15W</b>
DIMMING	DIM10 (0-10V dimming), DIMTR ( Triac ) - only 120V
VOLTAGE	120V, 277V, MVOLT

SERIES	DELIVERED LUMENS	WATTAGE
800	397	10 W
1000	528	14 W

Based on 3000K, 90+ CRI. Actual wattage may vary +/- 5%





**A1R-F-1163-LED-800L-DIM10-120-MD-30K-90-CL**

**TEST NO.: EL05082055**

INPUT WATTS: **10.5**

LUMENS: **397**

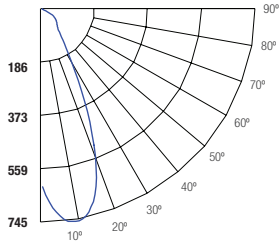
CRI: **90**

EFFICACY: **38**

CCT: **3000K**

SPACING CRITERIA: **0.68**

**Candle Power Distribution (Candelas)**



**Zonal Lumens Summary**

Zone	Lumens	%Lamp	%Fixt
0-20	177.97	44.8	44.9
0-30	275.94	69.5	69.5
0-40	326.24	82.2	82.2
0-60	384.73	97	97
0-80	394.74	99.5	99.5
0-90	394.79	99.5	99.5

**Luminance (Average candela/M<sup>2</sup>)**

Angle in Degrees	Average 0°	Average 45°	Average 90°
45	33281	23454	14615
55	30956	19238	10199
65	21197	12421	5637
75	53	106	159
85	79	196	314

**Lumens Per Zone**

Zone	Lumens
0-10	55.52
10-20	122.45
20-30	97.96
30-40	50.31
40-50	33.36
50-60	25.13
60-70	9.31
70-80	0.71
80-90	0.04

**Candela Tabulation**

Q	
0	617.16
5	708.01
15	655.05
25	334.68
35	115.19
45	68.75
55	51.87
65	26.17
75	0.04
85	0.02
90	0.02

**Coefficients of Utilization - Zonal Cavity Method**

Effective Floor Cavity Reflectance 0.20

Cone of Light			
2	214	1.0	1.2
3	56.7	2.0	2.4
5	24.7	3.1	3.6
7	13.7	4.1	4.8
8	8.96	5.1	6.0
10	6.17	6.2	7.2
BEAM DIA. MEASURED AT 50% OF NADIR F.C.			

	RC	80%				70%				50%				30%				10%				0%
	RW	70%	50%	30%	10%	70%	50%	30%	10%	50%	30%	10%	50%	30%	10%	50%	30%	10%	0%			
ROOM CAVITY RATIO	0	119	119	119	119	116	116	116	116	111	111	111	106	106	106	102	102	102	99			
	1	113	110	108	105	111	108	106	104	104	102	100	100	99	97	97	95	94	92			
	2	107	102	98	94	105	100	96	93	97	94	91	94	91	89	91	89	87	85			
	3	101	95	90	85	99	93	89	85	91	87	83	88	85	82	86	83	81	79			
	4	96	88	83	78	94	87	82	78	85	80	77	83	79	76	81	78	75	73			
	5	91	83	77	72	90	82	76	72	80	75	71	78	74	71	76	73	70	68			
	6	87	78	72	67	85	77	71	67	75	70	66	74	69	66	72	69	65	64			
	7	83	73	67	63	81	73	67	63	71	66	62	70	65	62	69	65	62	60			
	8	79	69	63	59	78	69	63	59	67	62	59	66	62	58	65	61	58	57			
	9	75	66	60	56	74	65	59	56	64	59	55	63	59	55	62	58	55	54			
10	72	62	57	53	71	62	56	53	61	56	53	60	56	52	60	55	52	51				

RC - Ceiling Cavity Reflectance RW - Wall Reflectance

RC - Ceiling Cavity Reflectance RW - Wall Reflectance

**A1R-F-1163-LED-1000L-DIM10-120-MD-30K-90-CL**

**TEST NO.: EL05082055**

INPUT WATTS: **14.6**

LUMENS: **528**

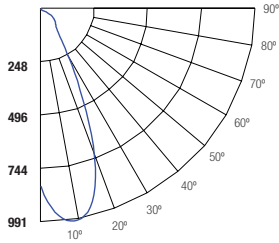
CRI: **90**

EFFICACY: **36**

CCT: **3000K**

SPACING CRITERIA: **0.68**

**Candle Power Distribution (Candelas)**



**Zonal Lumens Summary**

Zone	Lumens	%Lamp	%Fixt
0-20	236.84	44.8	44.8
0-30	367.35	69.5	69.5
0-40	434.28	82.2	82.2
0-60	512.11	96.9	96.9
0-80	525.63	99.5	99.5
0-90	525.66	99.5	99.5

**Luminance (Average candela/M<sup>2</sup>)**

Angle in Degrees	Average 0°	Average 45°	Average 90°
45	44246	31193	19427
55	41125	25611	13529
65	28122	16519	7184
75	26	139	159
85	79	118	79

**Lumens Per Zone**

Zone	Lumens
0-10	73.86
10-20	162.98
20-30	130.51
30-40	66.93
40-50	44.37
50-60	33.47
60-70	12.44
70-80	1.07
80-90	0.03

**Candela Tabulation**

Q	
0	820.36
5	939.57
15	869.91
25	441.42
35	152.77
45	91.4
55	68.91
65	34.72
75	0.02
85	0.02
90	0.02

**Coefficients of Utilization - Zonal Cavity Method**

Effective Floor Cavity Reflectance 0.20

Cone of Light			
2	284	1.0	1.2
3	75.3	2.0	2.4
5	32.8	3.1	3.6
7	18.3	4.1	4.8
8	11.9	5.1	6.0
10	8.20	6.2	7.2
BEAM DIA. MEASURED AT 50% OF NADIR F.C.			

	RC	80%				70%				50%				30%				10%				0%
	RW	70%	50%	30%	10%	70%	50%	30%	10%	50%	30%	10%	50%	30%	10%	50%	30%	10%	0%			
ROOM CAVITY RATIO	0	119	119	119	119	116	116	116	116	111	111	111	106	106	106	102	102	102	99			
	1	113	110	108	105	111	108	106	104	104	102	100	100	99	97	97	95	94	92			
	2	107	102	98	94	105	100	96	93	97	94	91	94	91	89	91	89	87	85			
	3	101	95	90	85	99	93	89	85	91	87	83	88	85	82	86	83	81	79			
	4	96	88	83	78	94	87	82	78	85	80	77	83	79	76	81	78	75	73			
	5	91	83	77	72	90	82	76	72	80	75	71	78	74	71	76	73	70	68			
	6	87	78	72	67	85	77	71	67	75	70	66	74	69	66	72	68	65	64			
	7	83	73	67	63	81	73	67	63	71	66	62	70	65	62	69	65	62	60			
	8	79	69	63	59	78	69	63	59	67	62	59	66	62	58	65	61	58	57			
	9	75	66	60	56	74	65	59	56	64	59	55	63	59	55	62	58	55	54			
10	72	62	57	53	71	62	56	53	61	56	53	60	56	52	60	55	52	51				

RC - Ceiling Cavity Reflectance RW - Wall Reflectance

RC - Ceiling Cavity Reflectance RW - Wall Reflectance